



CHANCELLOR COURT

www.chancellorcourt.com

Sales Agent:

DEBBIE INGRAM

PROPERTY & DEVELOPMENT CONSULTANCY

0208 458 7040

WWW.DEBBIEINGRAM.CO.UK



A brand new development of
8 exquisite three bedroom
apartments, each with private
outside space, a stunning view
and underground parking.

Chancellor Court is located
in one of north London's most
desirable neighbourhoods.
It benefits from great local
amenities and transport links.



Breathe in the view.
The terraces of Chancellor
Court offer one of the best
views in north London.
The picturesque College
Farm is a surprising oasis
of rural tranquility within
the hustle and bustle
of the big city.

Left:
 La Délivrance (the naked lady)
 is an elegant bronze statue by
 the French sculptor Émile
 Oscar Guillaume. It was
 erected to mark the end
 of WW1 and over the past
 90 years it has become a
 significant local landmark.

Right:
 Transport connections start
 right here on your doorstep.
 There is quick and easy access
 to the tube stations at Golders
 Green and Finchley Central.



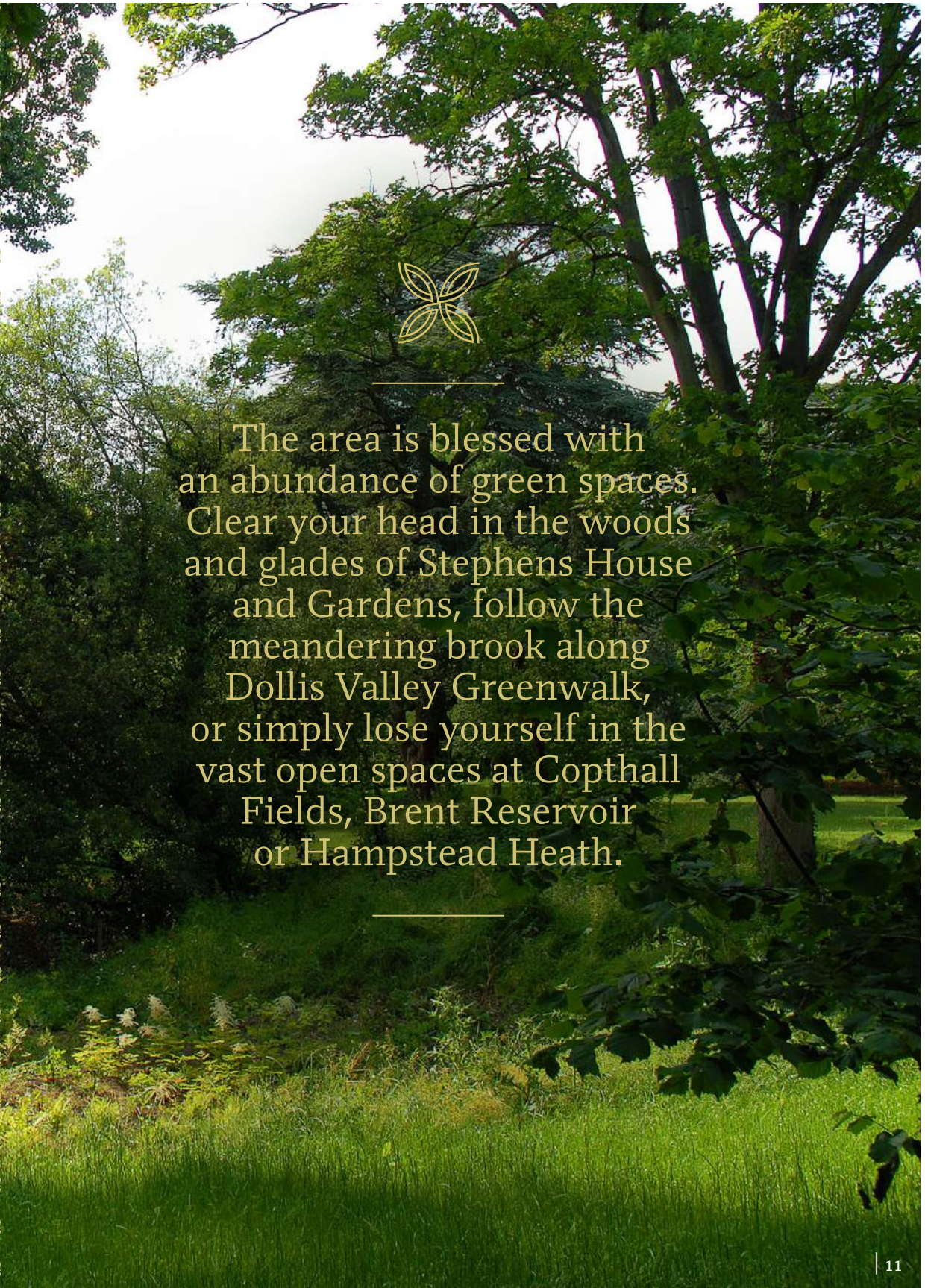


The local shopping area
is packed with well run
independent boutiques, book
stores, cafes, delis, restaurants,
shoe shops, salons and
supermarkets.
You'll find almost everything
you need within just
a short walk.



Below:
M&S, Waitrose and Gail's
Bakery are just a few of the
local food stores just a short
stroll from Chancellor Court.





The area is blessed with an abundance of green spaces. Clear your head in the woods and glades of Stephens House and Gardens, follow the meandering brook along Dollis Valley Greenwalk, or simply lose yourself in the vast open spaces at Copthall Fields, Brent Reservoir or Hampstead Heath.

Previous Page:
 A section of the beautifully
 landscaped gardens at
 Stephens House.

Left top:
 Connect to the Dollis Valley
 Greenwalk just meters
 from Chancellor Court.

Right top:
 Under a canopy of leaves the
 Mutton Brook meanders its way
 towards the Brent Reservoir.

Left bottom:
 Stephens House offers a year
 round programme of events,
 exhibitions and talks.

Right Bottom:
 The Pergola at Golders Hill Park
 is probably one of London's
 best-kept secrets.





CAFES & PUBS

Daniels Bakery
Bakery & Cafe
12-14 Hallswelle Rd,
London NW11 0DL
danielscatering.co.uk

Gail's Bakery
Bakery & Cafe
30 Temple Fortune
Parade, London NW11 0QS
gailsbread.co.uk



Tintico
Café & Coffee Specialists
2-4 Station Rd,
London N3 2RY
www.tintico.co.uk

Costa Coffee
Cafe
27 Temple Fortune Parade,
Temple Fortune, London
NW11 0QX

Catcher in the Rye
Gastro Pub
315 -319 Regents Park Road
London N3 1DP



RESTAURANTS

Burger Bar
Diner
1 Bridge Lane,
London NW11 0EA
burgerbar.uk.com



Pan Dan Thai Kitchen
Thai Restaurant
1057 Finchley Road, Temple
Fortune NW11 0PU
twobrothers.co.uk

The Salt Beef Bar
Salt Beef Bar
2 Finchley Road, Temple
Fortune NW11 0AL

Delisserie
New York Deli & Grill
1 Belmont Parade,
Finchley Rd. NW11 6XP

Cafe Also
Mediterranean restaurant
1255 Finchley Rd, Golders
Green, London NW11 0AD



Nu Nosh
Restaurant
816 Finchley Rd,
London NW11 6XL

ENTERTAINMENT

Phoenix Cinema
Cinema, Cafe, Events
52 High Rd, East Finchley,
London N2 9PJ
phoenixcinema.co.uk

Vue Cinema
Multi-Screen Cinema
Great North Leisure Park,
Chaplin Square,
London N12 0GL
www.myvue.com

Everyman Cinema
Cinema, Cafe, Events
5 Holly Bush Vale
Hampstead NW3 6TX
everymancinema.com



Arts Depot
Theatre, Gallery, Cafe
5 Nether St, North Finchley,
London N12 0GA
artsdepot.co.uk

SHOPPING

M&S
Groceries
820-832 Finchley Rd,
Temple Fortune,
London NW11 6XL
marksandspencer.com

Waitrose
Groceries
32-39 Temple Fortune
Parade, London NW11 0QS
waitrose.com



Sainsbury's
Groceries
2 Dollis Park Rd,
Dollis Park, Finchley,
London N3 1HF
sainsburys.co.uk

J A Corney
Fishmonger
16 Hallswelle Parade,
Finchley Road, London
NW11 0DL

Kosher Deli
Butchers & Delicatessen
9a Hallswelle Parade,
London NW11 0QS
kosherdeli.co.uk

Silvermans
Kosher Butcher
4-5 Hallswelle Parade,
Temple Fortune, London
NW11 0DL

Binyamin Wholefoods
7 Monkville Parade,
Finchley Road,
London, NW11 0AL
josephsbookstore.com



Joseph's Books
Books
2 Ashbourne Parade, 1257
Finchley Road, Temple
Fortune, NW11 0AD
josephsbookstore.com

Genevieve
Women's clothing
Monkville Parade,
Finchley Rd, NW11 0AL
www.genevievesweb.com

Larizia
Quality Shoe Shop
26 Temple Fortune Parade,
London NW11 0QS
www.larizia.com



Anoushka G
*Bespoke Evening &
Wedding Wear for Women*
31 Temple Fortune Parade,
London, NW11 0QN

OPEN SPACES

Stephens House & Gardens
17 East End Rd, Finchley,
London N3 3QE
www.stephenshouse
andgardens.com

Victoria Park
Park, Cafe, Tennis Courts
Ballards Lane Barnet
Finchley North
London N3 2SU



Hendon Park
*Park, Kosher Café, Northern
Line Railway Cutting*
Queens Road, Hendon,
London NW4 2TL
hendonparkcafe.co.uk

Sunny Hill Park
*Park, Café, Playground,
Tennis, Football*
Watford Way, Mill Hill,
London NW4 4XA
sunnyhillcafe.co.uk

**The Hill Garden
and Pergola**
Italian Garden
Inverforth Close,
London NW3 7EX
cityoflondon.gov.uk

FITNESS

**Virgin Active Mill Hill
Health Club**
34 Langstone Way,
London NW7 1GU



Finchley Golf Club
Nether Court, Frith Lane,
London NW7 1PU
finchleygolfclub.com

Hendon Golf Club
Ashley Walk, Devonshire
Lane, London NW7 1DG
hendongolf.com

**Park View
Health Club**
183-, 191 Ballards Lane,
London N3 1LP

**Barnet Copthall
Leisure Centre**
Champions Way, Hendon,
London NW4 1PX
better.org.uk

Nuffield Health Club
Central Circus 260 Hendon
Way, London NW4 3NL
www.nuffieldhealth.com

TRANSPORT

Finchley Central Tube
Northern Line
Regent's Park Road,
London N3 2RY



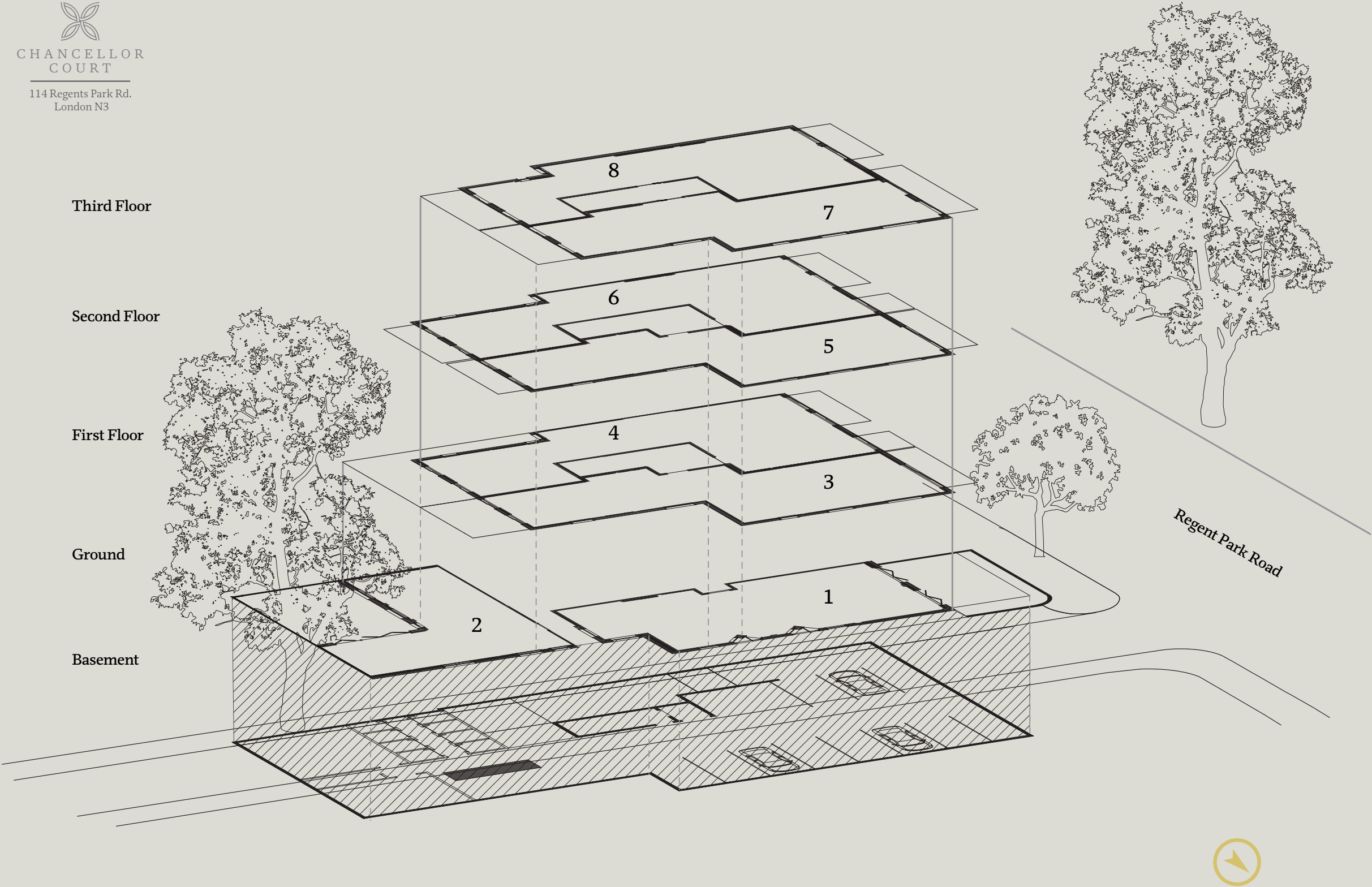
Golders Green Tube
Northern Line
North End Rd,
London NW11 7RN











01

3 bedrooms, 2 bathrooms
ground floor apartment
with private courtyard
1622 ft² / 150m²

Living / Dining:
29'8" x 17'0" / 9.0 x 5.2
Kitchen:
15'5" x 9'10" / 4.7 x 3.0
Courtyard:
32'7" x 17'7" / 9.9 x 5.4
Bathroom:
9'7" x 6'0" / 2.9 x 1.8
Utility:
5'2" x 3'9" / 1.6 x 1.2

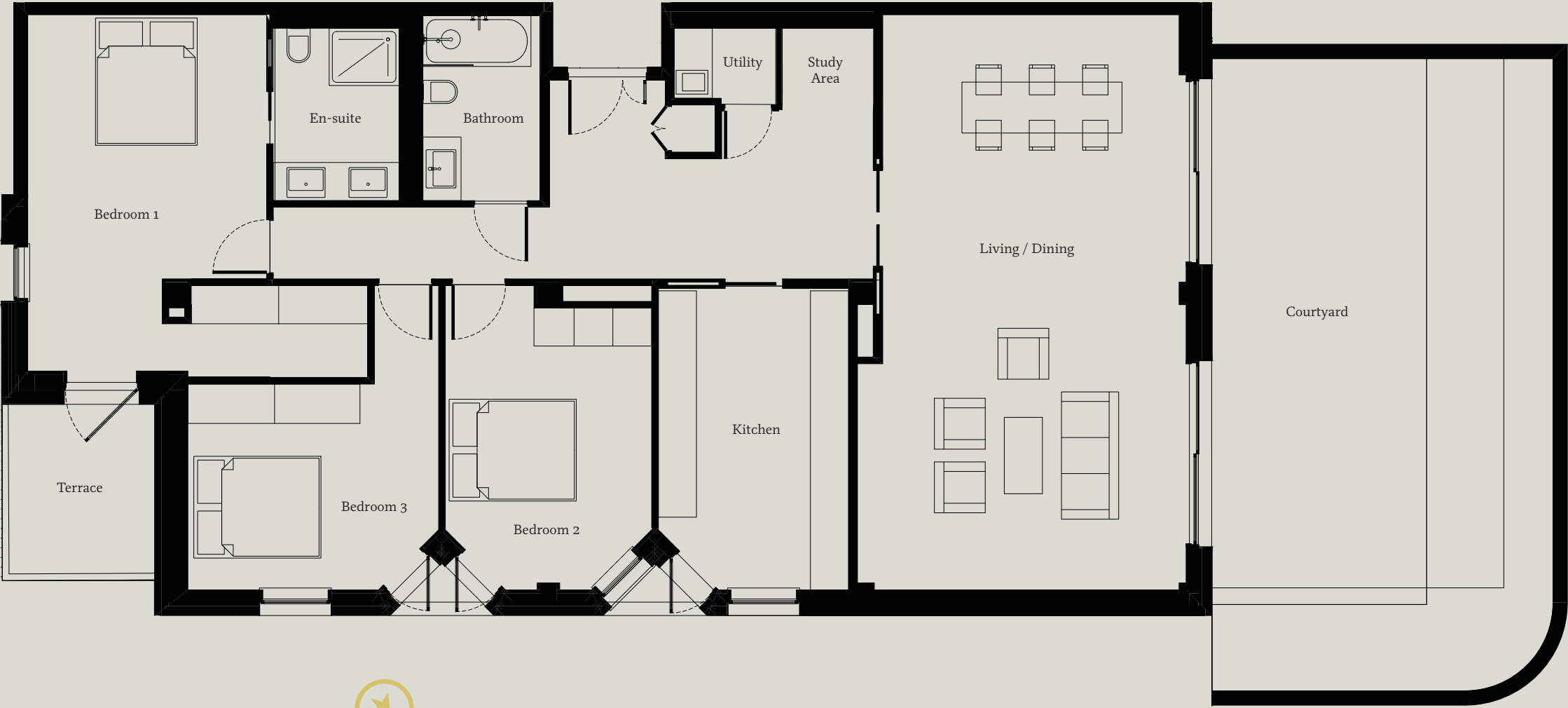
Bedroom 1:
18'4" x 12'4" / 5.6 x 3.8
Ensuite:
8'11" x 6'6" / 2.7 x 2.0
Bedroom 2:
15'7" x 10'8" / 4.7 x 3.2
Bedroom 3:
15'7" x 12'11" / 4.7 x 3.9
Terrace:
8'8" x 7'5" / 2.7 x 2.3



Side



Front



02

3 bedrooms, 2 bathrooms
ground floor apartment
with private courtyard
1270 ft² / 118m²

Living / Dining: 18'7" x 16'2" / 5.7 x 4.9	Bedroom 1: 17'11" x 14'11" / 5.5 x 4.6
Kitchen: 18'7" x 7'9" / 5.7 x 2.4	Ensuite: 10'2" x 5'10" / 3.1 x 1.8
Courtyard: 30'8" x 19'10" / 9.4 x 6.0	Bedroom 2: 13'8" x 10'3" / 4.2 x 3.1
Bathroom: 8'1" x 7'4" / 2.5 x 2.2	Bedroom 3: 13'8" x 10'3" / 4.2 x 3.1
WC: 7'4" x 4'8" / 2.2 x 1.4	



Side

Front



03

3 bedrooms, 2 bathrooms
first floor apartment
with private terraces
1693 ft² / 157m²

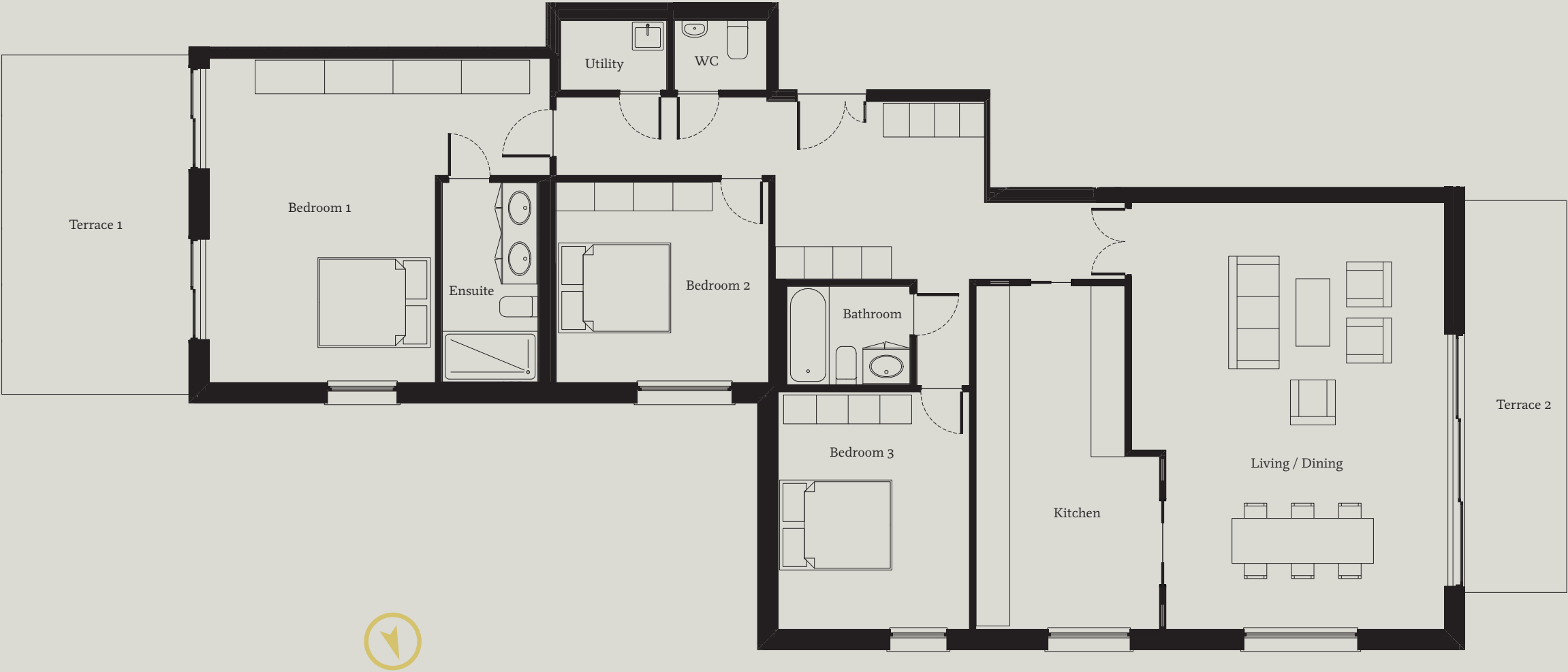
Living / Dining: 24'11" x 18'3" / 7.6 x 6.6	Bedroom 1: 19'11" x 18'11" / 6.1 x 5.8
Kitchen: 20'1" x 10'9" / 6.1 x 3.3	Ensuite: 11'8" x 5'7" / 3.5 x 1.7
Terrace 1: 19'9" x 10'11" / 6.0 x 3.3	Bedroom 2: 12'5" x 11'9" / 3.8 x 3.6
Terrace 2: 23'4" x 6'4" / 7.1 x 1.9	Bedroom 3: 13'10" x 11'2" / 4.2 x 3.4
Bathroom: 7'2" x 5'9" / 2.2 x 1.7	



Side



Front



04

3 bedrooms, 2 bathrooms
first floor apartment
with private terraces
1797 ft² / 167m²

Living / Dining:
22'11" x 20'2" / 7.0 x 6.1
Kitchen:
20'2" x 13'1" / 6.1 x 4.0
Terrace 1:
36'0" x 28'8" / 11.0 x 8.7
Terrace 2
20'4" x 6'5" / 6.2 x 2.0
Balcony:
10'3" x 6'4" / 3.1 x 1.9

Bedroom 1:
15'5" x 13'0" / 4.7 x 4.0
Wardrobe & Ensuite:
14'10" x 7'5" / 4.6 x 2.3
Bedroom 2:
19'8" x 9'5" / 6.0 x 2.9
Bedroom 3:
16'9" x 12'7" / 5.1 x 3.8
Bathroom:
9'4" x 6'9" / 2.8 x 2.0



Side



Front



05

3 bedrooms, 2 bathrooms
second floor apartment
with private terraces
1714 ft² / 159m²

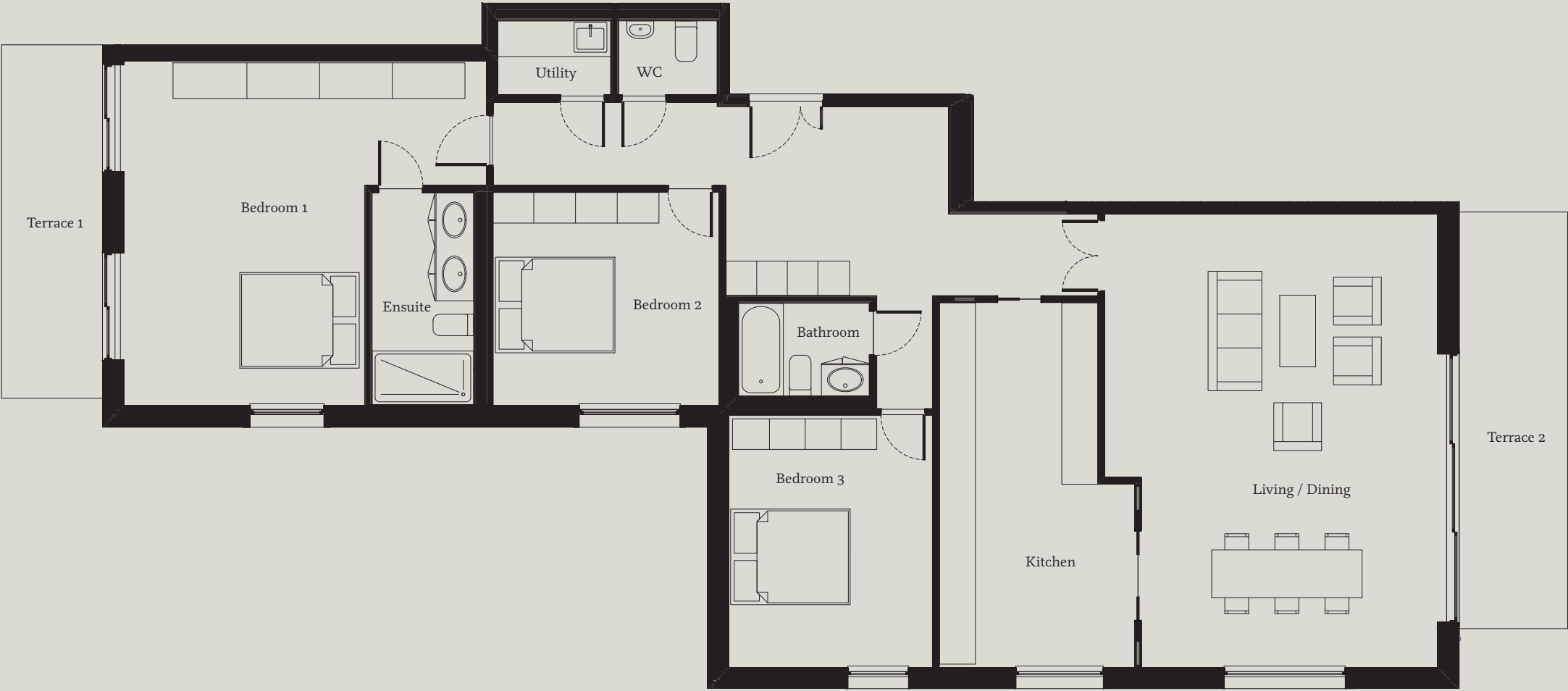
Living / Dining: 24'11" x 18'3" / 7.6 x 5.6	Bedroom 1: 19'11" x 18'11" / 6.1 x 5.8
Kitchen: 20'1" x 10'9" / 6.1 x 3.3	Ensuite: 11'8" x 5'7" / 3.5 x 1.7
Terrace 1: 23'4" x 6'4" / 7.1 x 1.9	Bedroom 2: 11'9" x 12'5" / 3.8 x 3.6
Terrace 2: 20'1" x 6'0" / 6.1 x 1.8	Bedroom 3: 13'10" x 11'2" / 4.2 x 3.4
Bathroom: 7'2" x 5'1" / 2.2 x 1.5	



Side



Front



06

3 bedrooms, 2 bathrooms
second floor apartment
with private terraces
1808 ft² / 168m²

Living / Dining:
22'11" x 20'2" / 7.0 x 6.1
Kitchen:
20'2" x 13'1" / 6.1 x 4.0
Terrace 1:
21'9" x 5'11" / 6.6 x 1.8
Terrace 2
20'2" x 6'4" / 6.2 x 1.9
Balcony:
10'2" x 6'4" / 3.1 x 1.9

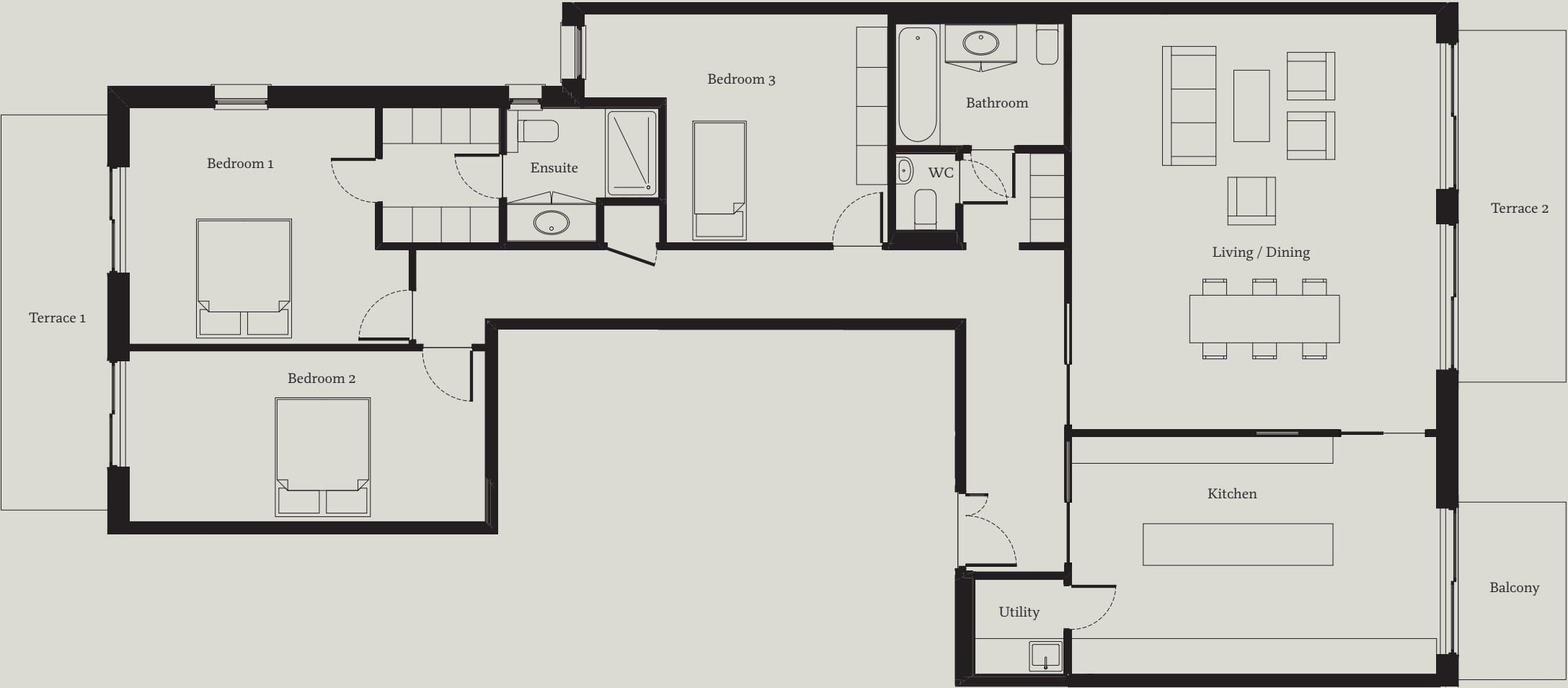
Bedroom 1:
15'5" x 13'0" / 4.7 x 4.0
Wardrobe & Ensuite:
14'10" x 7'5" / 4.6 x 2.3
Bedroom 2:
19'8" x 9'5" / 6.0 x 2.9
Bedroom 3:
16'9" x 12'7" / 5.1 x 3.8
Bathroom:
9'4" x 6'9" / 2.8 x 2.0



Side



Front



07

3 bedrooms, 2 bathrooms
third floor apartment
with private terraces
1481 ft² / 137m²

Living / Dining:
23'1" x 20'5" / 7.0 x 6.2
Kitchen:
17'6" x 8'11" / 5.3 x 2.7
Terrace 1:
21'3" x 7'9" / 6.5 x 2.4
Terrace 2:
28'6" x 6'4" / 8.7 x 1.9
Bathroom:
10'2" x 6'0" / 3.1 x 1.8

Bedroom 1:
18'11" x 17'7" / 5.8 x 5.4
Ensuite:
8'3" x 7'5" / 2.5 x 2.3
Bedroom 2:
11'1" x 7'5" / 3.4 x 2.6
Bedroom 3:
13'9" x 11'9" / 4.2 x 3.6



Side



Front



08

3 bedrooms, 2 bathrooms
third floor apartment
with private terraces
1463 ft² / 136m²

Living / Dining: 31'10" x 15'9" / 9.7 x 4.8	Bedroom 1: 17'0" x 10'6" / 5.2 x 3.2
Kitchen: 14'1" x 9'11" / 4.3 x 3.0	Ensuite: 9'6" x 5'7" / 2.9 x 1.7
Terrace 1: 21'4" x 7'7" / 6.5 x 2.3	Walk-in wardrobe: 5'7" x 3'11" / 1.7 x 1.2
Terrace 2: 20'4" x 6'3" / 6.2 x 1.9	Bedroom 2: 10'10" x 10'6" / 3.3 x 3.2
Bathroom: 6'3" x 5'11" / 1.9 x 1.8	Bedroom 3: 11'9" x 8'10" / 3.6 x 2.7



Side

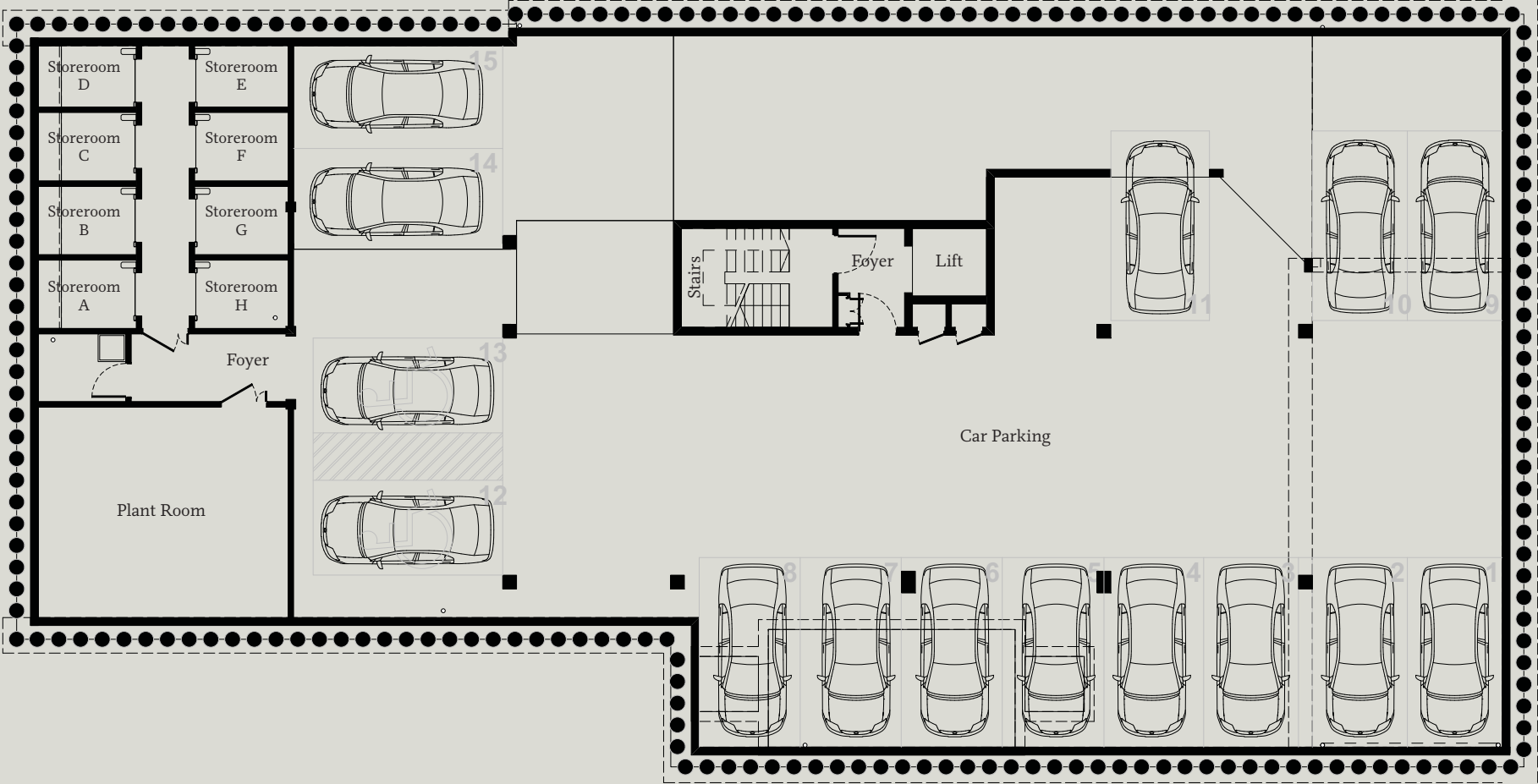


Front



Basement

Secure parking for up to 15 cars, plus private storage rooms for each apartment.



Specifications

The apartments are exceptionally well fitted with high specification designer kitchens and bathrooms, under floor heating throughout, and wired for modern entertainment systems. The full specification is listed below.

Kitchens

- Individually designed German or Italian kitchens
- Elegant stone work surfaces
- Fully integrated fridge freezer
- Siemens or equivalent fully integrated combi-microwave oven
- Siemens or equivalent oven
- Siemens or equivalent plate warming drawer
- Siemens or equivalent induction hob with touch sensor control
- Siemens or equivalent stainless steel extractor fan
- Waste disposal system
- Fully integrated dishwasher
- Boiling and cold filter water tap
- Glass splashbacks



Bathrooms & En-suites

- Elegant Porcelanosa or equivalent wall-mounted toilets
- Generous basins with chrome mixer taps
- Thermostatically controlled showers in en-suites
- Steel bath with chrome mixer taps
- Full tiling to bathroom walls and floors in ceramic or porcelain
- Fitted vanity units
- Heated towel rails
- Dual voltage shaver points
- Underfloor heating
- Recessed ceiling LED down lights
- LED-lit feature niches



Bedrooms

- Bespoke lined wardrobes, handmade drawers, shelves and hanging rails
- Luxury carpets with Cloud 9 underlay
- Master bedroom reading pendants
- Generous sized bedrooms to accommodate king-sized beds, with appropriately positioned switches and sockets

Other Specifications

- Full gas under floor central heating with room thermostats
- Double-glazed aluminium-framed windows and large sliding doors
- All apartments benefit from fabulously sized private balconies

Security and Peace of Mind

- External lighting
- Video entry door security
- Fully alarmed flats
- Apartment block wired for communal CCTV



Shared & Communal Areas

- Intercom system for communally accessed apartments
- Classic ceramic entrance hallway lit with designer lighting
- Solid noise reducing outside doors
- Landscaped communal areas
- Luxury lift providing access to all floors
- One reserved parking space per apartment



All specification details provided are indicative and may change. These details should be treated as general guidance only and cannot be relied upon accurately describing any of the specified matters prescribed by any order under the Consumer Protection from Unfair Trading Regulations 2008. Nor do they constitute a contract or a warranty.

Sales Agent:

DEBBIE INGRAM
PROPERTY & DEVELOPMENT CONSULTANCY
0208 458 7040
WWW.DEBBIEINGRAM.CO.UK

Another quality development by:



All specification details provided are indicative and may change. These details should be treated as general guidance only and cannot be relied upon accurately describing any of the specified matters prescribed by any order under the Consumer Protection from Unfair Trading Regulations 2008. Nor do they constitute a contract or a warranty.

Published by: Fresh Lime Developments, May 2019

Designed by: www.evolve.london